



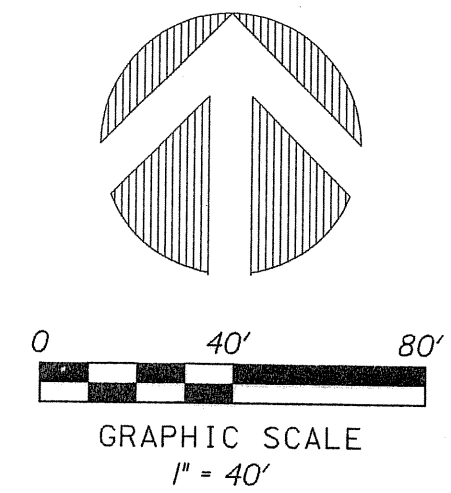
SURVEYING & MAPPING
Certificate of Authorization No. LB7264
Prepared by: Jeff S. Hodapp, P.S.M.
951 Broken Sound Parkway, Suite 320
Boca Raton, Florida 33487
Tel: (561) 241-9988
Fax: (561) 241-5182

VERONA PALMS

A REPLAT OF PORTIONS OF TRACTS 4, 5 AND 6, SUBDIVISION OF THE
SOUTHWEST ONE-QUARTER OF SECTION 36, TOWNSHIP 44 SOUTH, RANGE 42 EAST
(P.B. 3, PG. 10, P.B.C.R.), CITY OF GREENACRES, PALM BEACH COUNTY, FLORIDA.

JANUARY, 2006
February

74
SHEET 3 OF 4



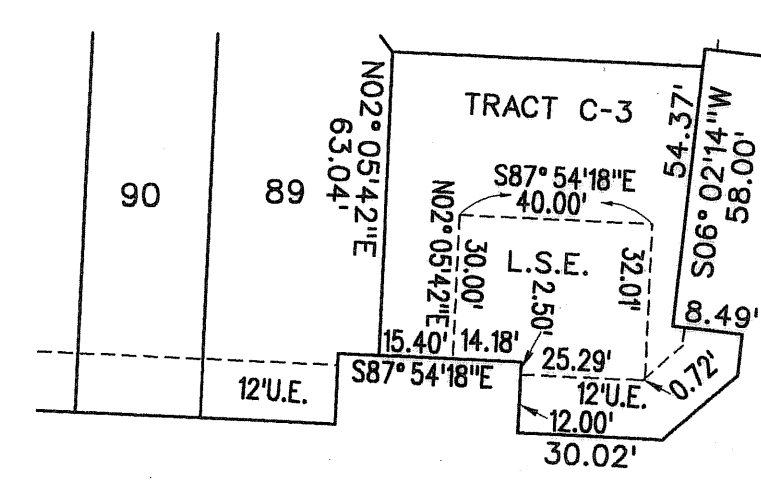
LEGEND:

- SET P.R.M. (UNLESS OTHERWISE NOTED) - 4" X 4" CONC. MON. WITH ALUMINUM DISK STAMPED P.R.M. #LB7264
- P.C.P. CENTERLINE

ABBREVIATIONS:

- CH CHORD
- CHB CHORD BEARING
- CONC. CONCRETE
- COR. CORNER
- D DELTA (CENTRAL ANGLE)
- D.E. DRAINAGE EASEMENT
- AR LENGTH
- L.B. LICENSED BUSINESS
- L.M.E. LANDSCAPE EASEMENT
- L.M.A.E. LAKE MAINTENANCE EASEMENT
- L.S. LAKE MAINTENANCE ACCESS EASEMENT
- L.W.D.D. LAKE WORTH DRAINAGE DISTRICT
- MON. MONUMENT
- O.R.B. OFFICIAL RECORDS BOOK
- N.R. NON-RADIAL
- P.B. PLAT BOOK
- P.B.C.R. PALM BEACH COUNTY RECORDS
- PG. PAGE
- P.C.P. PERMANENT CONTROL POINT
- P.O.B. POINT OF BEGINNING
- P.O.C. POINT OF COMMENCEMENT
- P.R.M. PERMANENT REFERENCE MONUMENT
- P.S.M. PROFESSIONAL SURVEYOR & MAPPER
- P.U.D. PLANNED UNIT DEVELOPMENT
- R. RADIUS
- R.E.E. ROOF ENCROACHMENT EASEMENT
- R.W. RIGHT-OF-WAY
- SEC. SECTION
- S.F. SQUARE FEET
- U.E. UTILITY EASEMENT
- L.S.E. LIFT STATION EASEMENT

SEE SHEET 2



DETAIL



WENHART ESTATES
P.B. 25 PG. 147 P.B.C.R.

SEE SHEET 4